



**Noise Monitoring Result**

**Day Time (0700 - 1900hrs on normal weekdays)**

Location: M1a - Harbour Road Sports Centre

Date	Time	Weather	Measurement Noise Level			Baseline Level	Construction Noise Level	Limit Level
			Leq	L10	L90	Leq	Leq	Leq
Unit: dB(A), (30-min)								
02/12/14	10:39	Cloudy	68.6	71.0	64.0	72	69	75
08/12/14	13:56	Fine	73.7	76.5	68.0	72	68	75
17/12/14	11:24	Fine	70.7	73.5	65.0	72	71	75
22/12/14	9:40	Fine	75.7	76.8	67.5	72	73	75

Location: M2b - Noon-day gun area

Date	Time	Weather	Measurement Noise Level			Baseline Level	Construction Noise Level	Limit Level
			Leq	L10	L90	Leq	Leq	Leq
Unit: dB(A), (30-min)								
02/12/14	16:50	Cloudy	69.0	70.5	67.2	68	63	75
08/12/14	14:48	Fine	69.4	70.5	67.0	68	65	75
16/12/14	11:18	Fine	70.0	74.2	66.5	68	66	75
22/12/14	10:20	Fine	68.4	69.5	66.0	68	61	75

Location: M3a - Tung Lo Wan Fire Station

Date	Time	Weather	Measurement Noise Level			Baseline Level	Construction Noise Level	Limit Level
			Leq	L10	L90	Leq	Leq	Leq
Unit: dB(A), (30-min)								
04/12/14	9:50	Fine	65.9	67.5	63.5	69	66	75
08/12/14	15:32	Fine	65.7	67.0	62.5	69	66	75
16/12/14	13:00	Fine	72.4	74.0	65.5	69	70	75
22/12/14	11:03	Fine	65.5	66.5	63.5	69	66	75

Location: M4b - Victoria Centre

Date	Time	Weather	Measurement Noise Level			Baseline Noise Level	Construction Noise Level	Limit Level
			Leq	L10	L90	Leq	Leq	Leq
Unit: dB(A), (30min)								
04/12/14	10:33	Fine	68.2	69.5	65.5	67	61	75
11/12/14	13:35	Fine	70.4	72.0	67.5	67	67	75
16/12/14	13:44	Fine	69.8	71.0	61.0	67	66	75
23/12/14	15:40	Cloudy	66.4	68.0	64.0	67	66	75

Location: M5b - City Garden

Date	Time	Weather	Measurement Noise Level			Baseline Level	Construction Noise Level	Limit Level
			Leq	L10	L90	Leq	Leq	Leq
Unit: dB(A), (30min)								
04/12/14	11:19	Fine	67.8	69.0	65.5	68	68	75
11/12/14	14:25	Fine	69.4	71.0	66.0	68	64	75
16/12/14	14:30	Fine	70.9	71.5	69.5	68	68	75
23/12/14	16:23	Cloudy	67.3	68.5	65.5	68	67	75

Location: M6 - HK Baptist Church Henrietta Secondary School

Date	Time	Weather	Measurement Noise Level			Baseline Level	Construction Noise Level	Limit Level
			Leq	L10	L90	Leq	Leq	Leq
Unit: dB(A), (30-min)								
04/12/14	13:41	Fine	73.2	74.5	71.0	71	70	70
11/12/14	15:06	Fine	73.4	74.5	71.0	71	70	65
16/12/14	15:10	Fine	74.3	75.5	72.0	71	72	65
23/12/14	17:00	Cloudy	73.0	74.0	71.0	71	69	70



## Noise Monitoring Result

### Day Time (0700 - 1900hrs on normal weekdays)

Location: M7e - International Finance Centre (Eastern End of Podium) (Reference Station)

Date	Time	Weather	Measurement Noise Level			Baseline Level	Construction Noise Level	Limit Level
			Leq	L10	L90	Leq	Leq	Leq
Unit: dB(A), (30-min)								
01/12/14	10:30	Cloudy	72.8	75.5	66.5	67	72	N/A
12/12/14	14:27	Fine	67.7	69.0	64.0	67	60	N/A
17/12/14	9:15	Fine	65.0	66.5	62.0	67	65	N/A
22/12/14	14:55	Fine	66.1	67.5	62.5	67	66	N/A

Location: M7w - International Finance Centre (Western End of Podium)

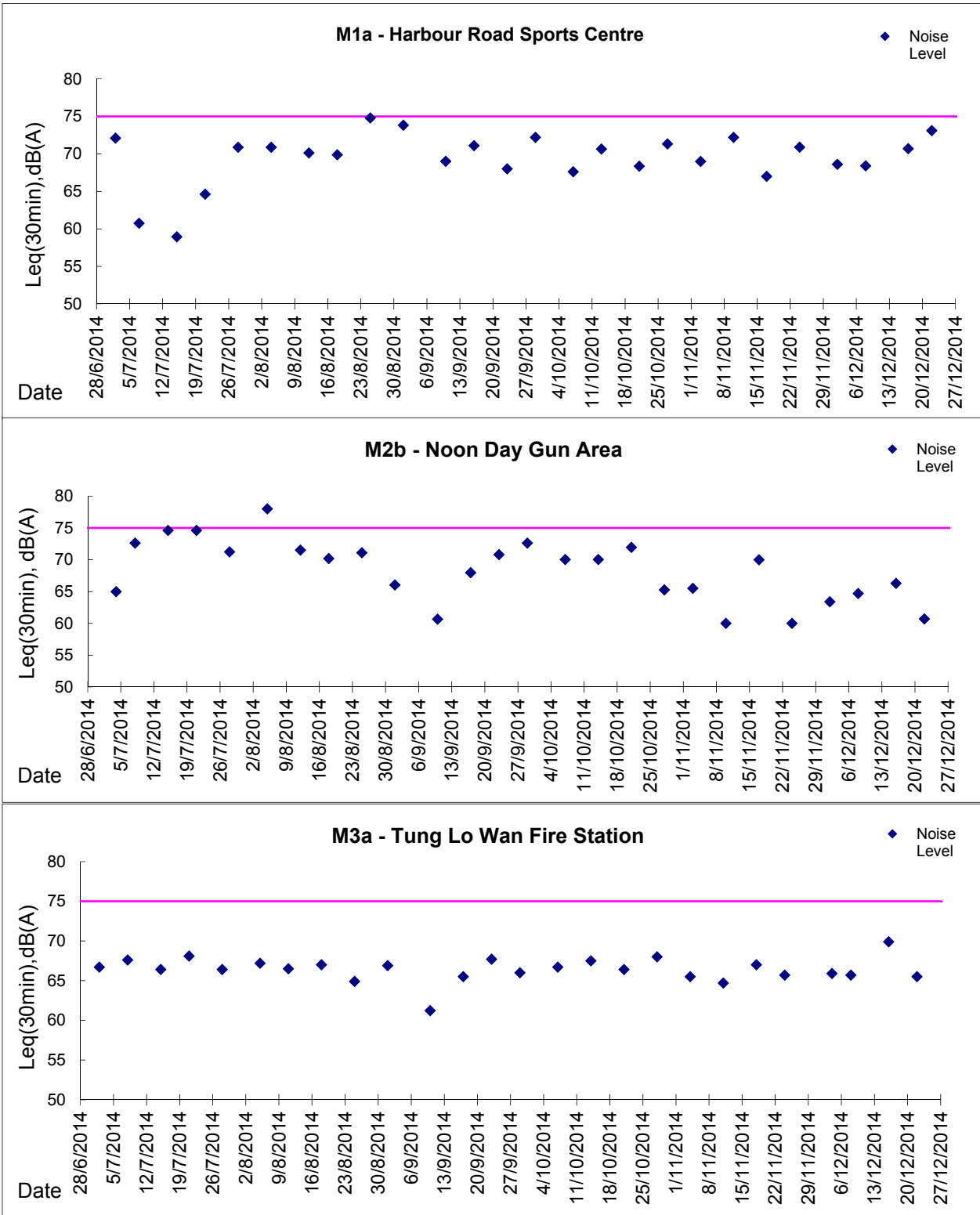
Date	Time	Weather	Measurement Noise Level			Baseline Level	Construction Noise Level	Limit Level
			Leq	L10	L90	Leq	Leq	Leq
Unit: dB(A), (30-min)								
01/12/14	11:05	Cloudy	69.0	74.0	59.5	69	69	75
12/12/14	13:50	Fine	68.7	70.0	66.0	69	69	75
17/12/14	9:52	Fine	64.9	66.0	62.5	69	65	75
22/12/14	14:19	Fine	66.6	67.5	64.5	69	67	75

Location: M8 - City Hall

Date	Time	Weather	Measurement Noise Level			Baseline Level	Construction Noise Level	Limit Level
			Leq	L10	L90	Leq	Leq	Leq
Unit: dB(A), (30-min)								
01/12/14	9:45	Cloudy	59.8	62.0	54.5	64	60	70
12/12/14	15:15	Fine	61.9	64.0	58.0	64	62	70
17/12/14	10:36	Fine	59.2	61.0	54.5	64	59	70
22/12/14	13:35	Fine	61.2	63.5	56.0	64	61	70



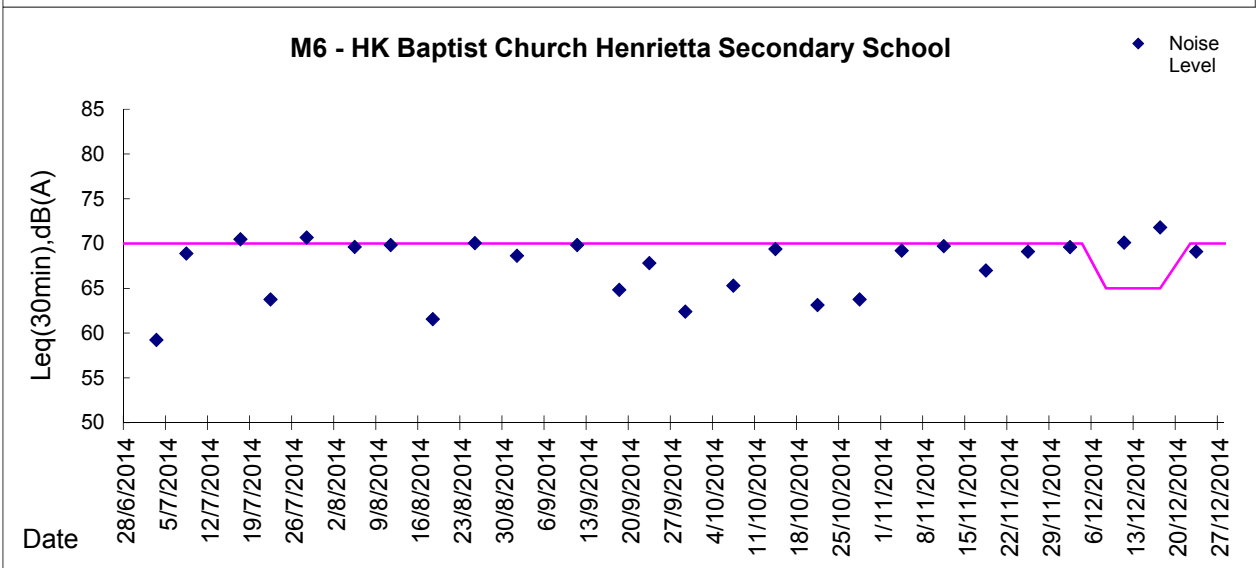
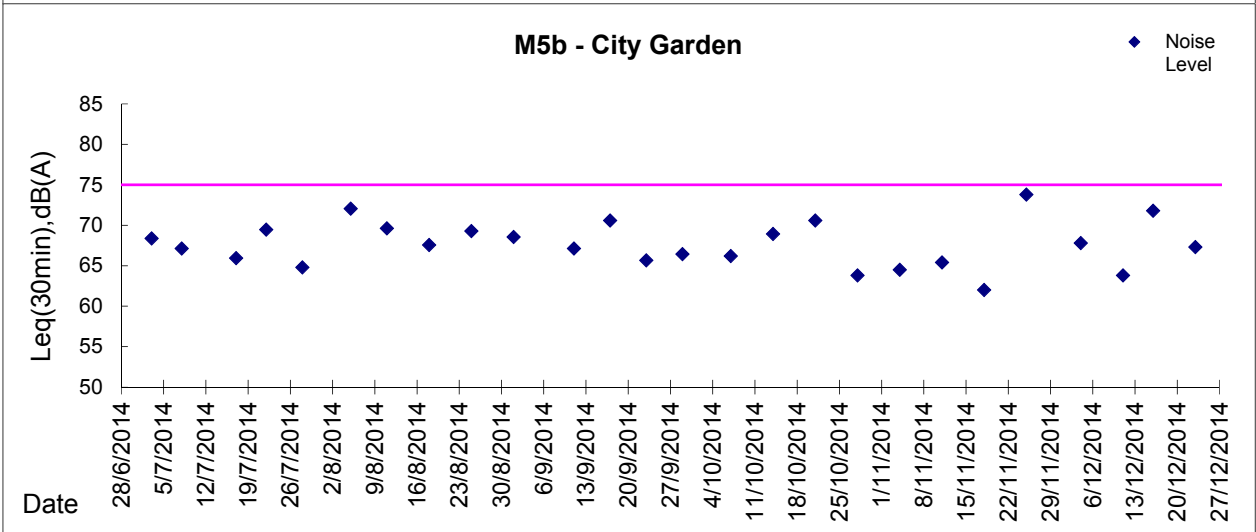
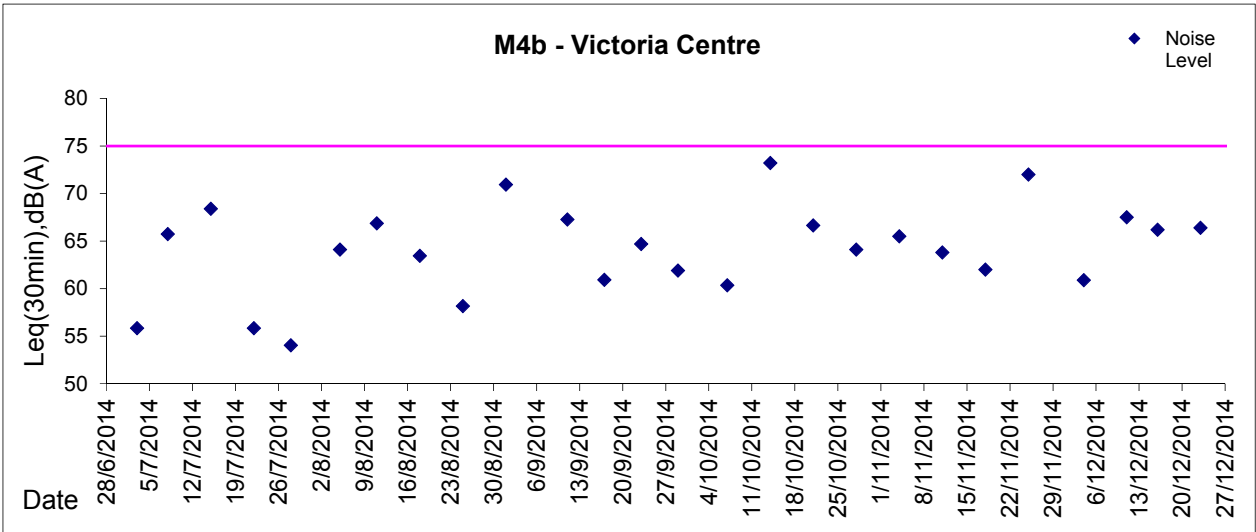
**Graphic Presentation of Noise Monitoring Result**  
**Day Time (0700 - 1900hrs on normal weekdays)**





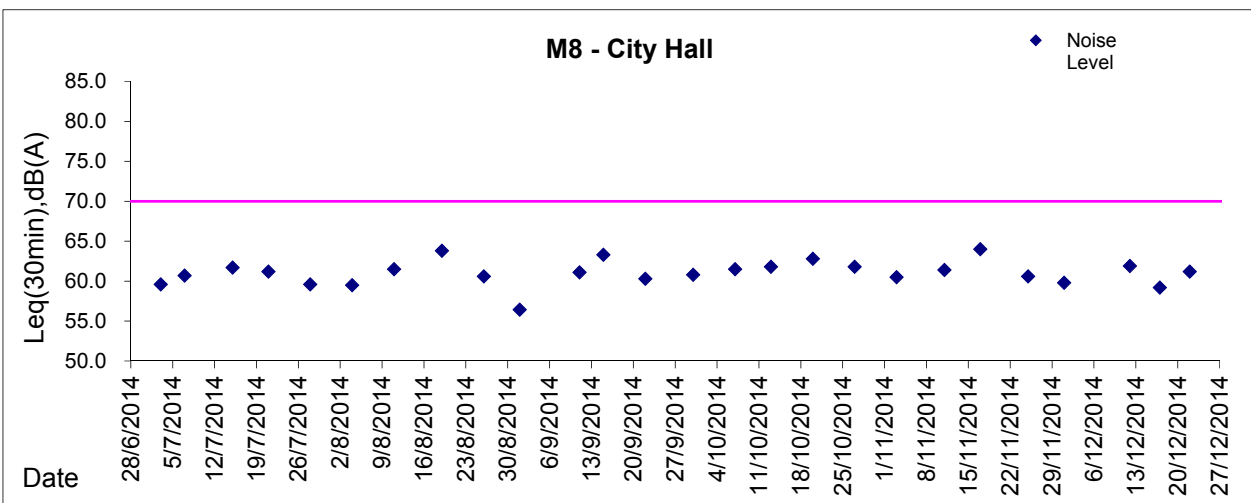
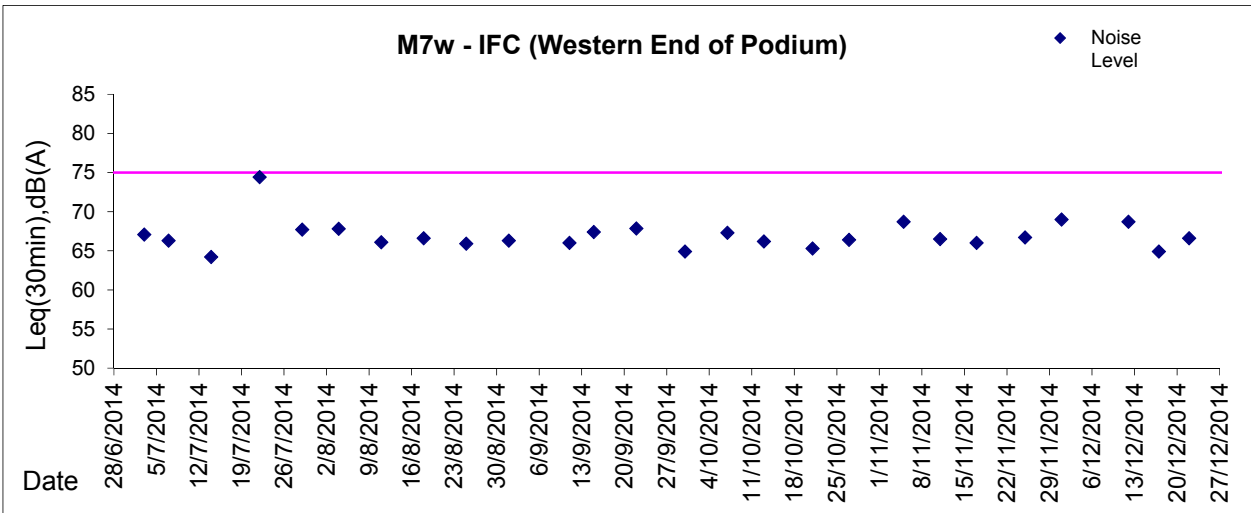
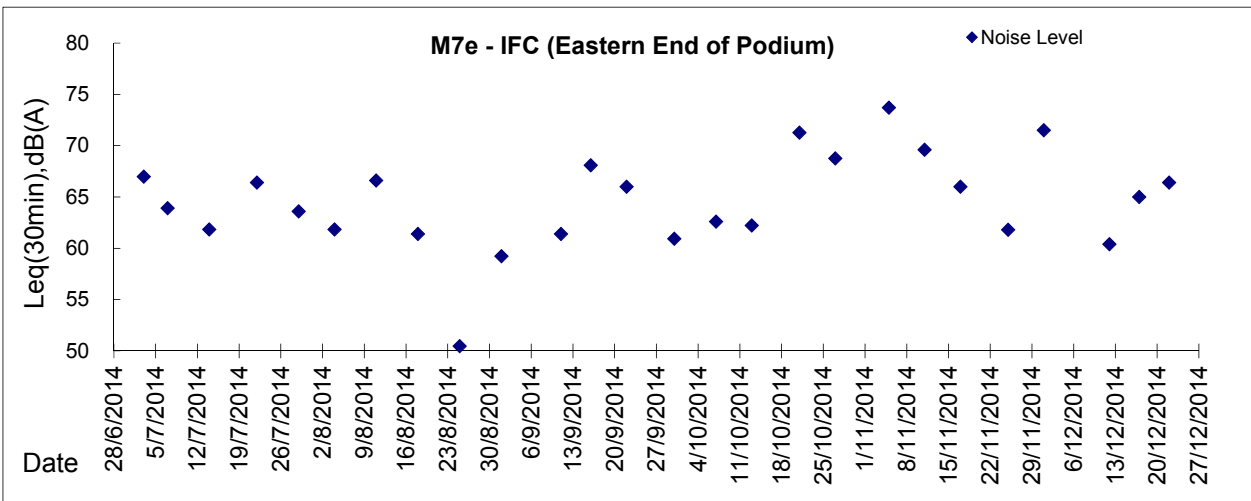
**Graphic Presentation of Noise Monitoring Result**

**Day Time (0700 - 1900hrs on normal weekdays)**





**Graphic Presentation of Noise Monitoring Result**  
**Day Time (0700 - 1900hrs on normal weekdays)**



\* Remark: M7e - IFC (Eastern End of Podium) is a reference monitoring station